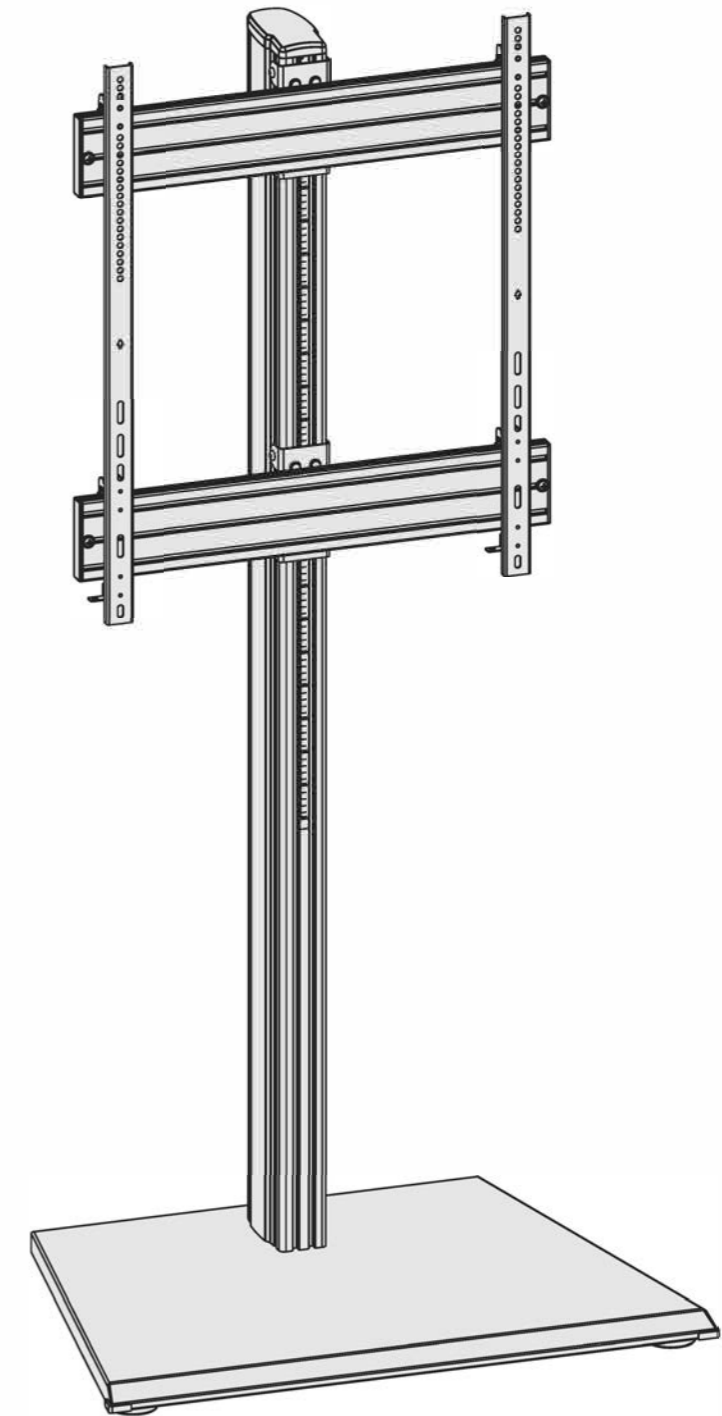


Supporto TV 60-100" su piedistallo modalità verticale



Manuale di istruzioni

031-1110K1



200x200/300x300
400x200/400x400
400x600/400x800
600x800



rated
150kg/330lbs

Lisez l'intégralité du manuel d'instructions avant de commencer l'installation et l'assemblage. Si vous avez des questions concernant les instructions ou les avertissements, veuillez contacter votre distributeur local pour obtenir de l'aide.

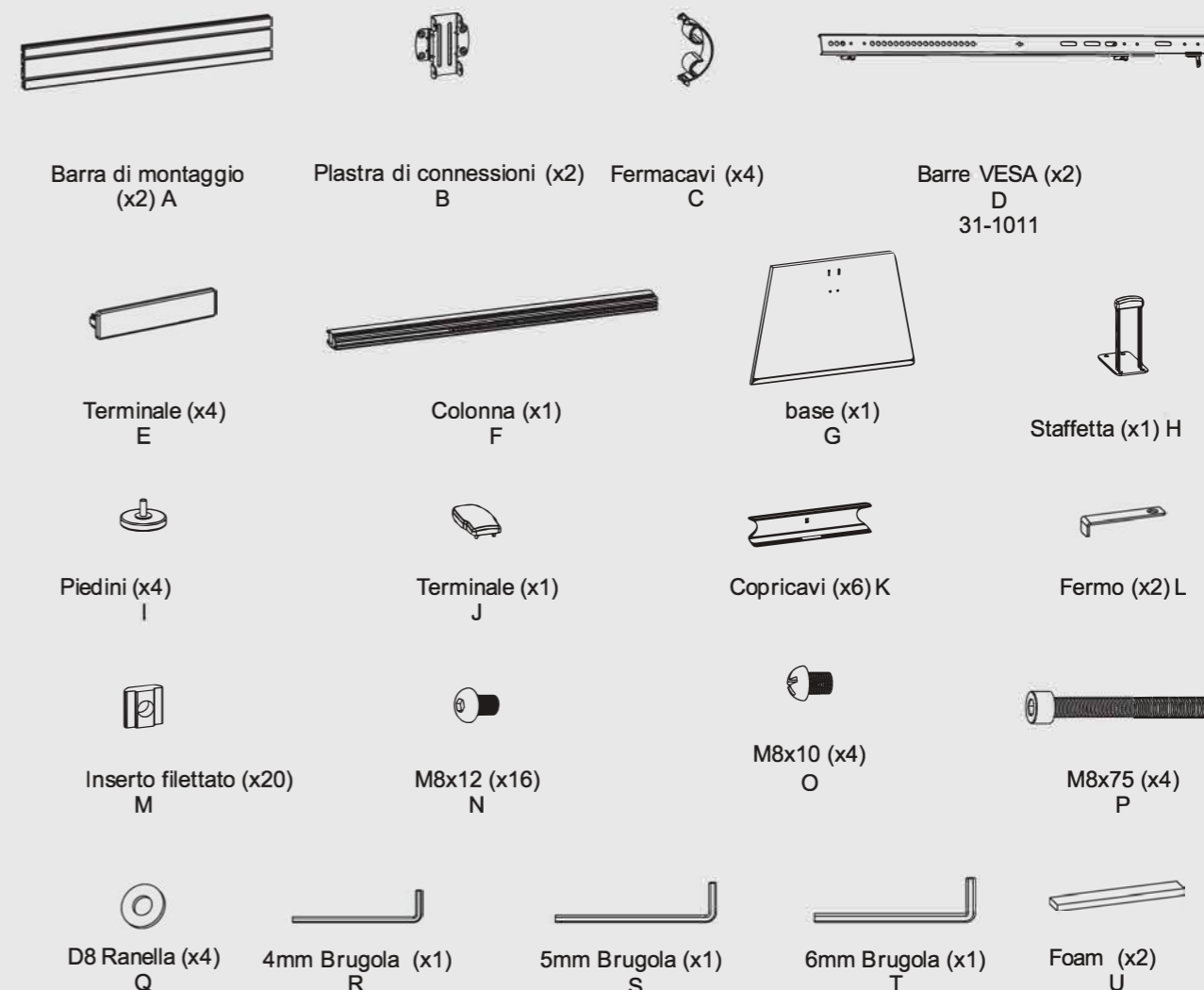
ATTENZIONE

- L'uso con prodotti più pesanti dei pesi nominali indicati può causare instabilità con conseguenti lesioni.
- Seguire attentamente le istruzioni di montaggio. Un'installazione impropria può causare danni o lesioni gravi! lesione.
- Devono essere utilizzati dispositivi e strumenti di sicurezza adeguati. Questo prodotto deve essere installato solo da professionisti.
- Assicurarsi che la superficie di supporto sostenga in modo sicuro il peso combinato dell'attrezzatura e di tutta la bulloneria e dei componenti collegati.
- Utilizzare le viti di montaggio fornite e **NON SERRARE ECCESSIVAMENTE LE VITI DI MONTAGGIO**.
- Questo prodotto contiene piccoli oggetti che potrebbero costituire un rischio di soffocamento se ingeriti. Tenere questi oggetti fuori dalla portata dei bambini.
- Questo prodotto è destinato esclusivamente all'uso interno. L'uso di questo prodotto all'aperto può causare guasti e /o lesioni al prodotto.

Necessari per l'installazione

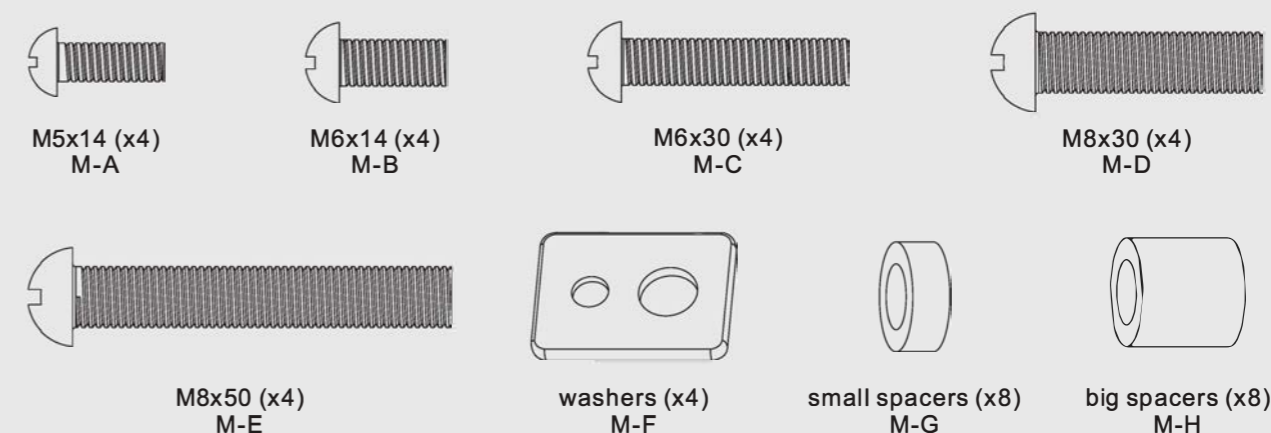


Lista dei componenti

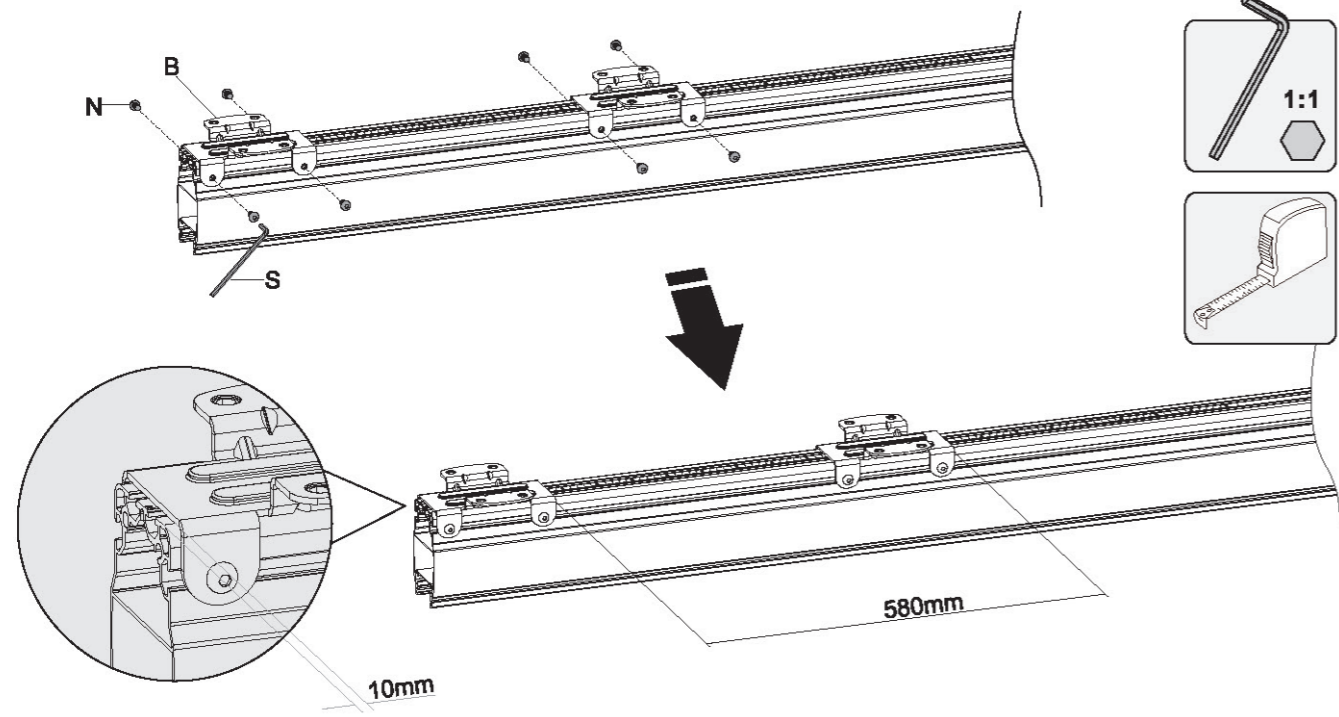
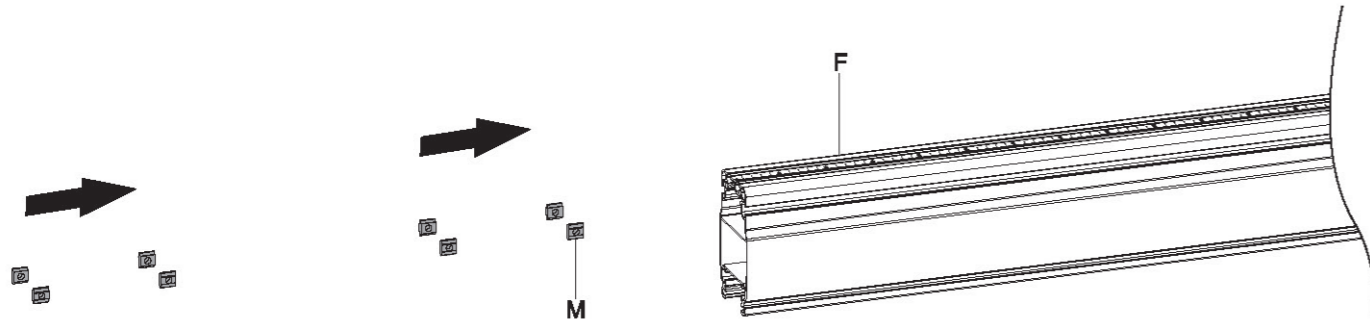


IMPORTANTE: Assicurarsi di aver ricevuto tutte le parti in base all'elenco di controllo dei componenti prima di procedere con l'installazione. In caso di parti mancanti o difettose, contattare il rivenditore per la sostituzione.

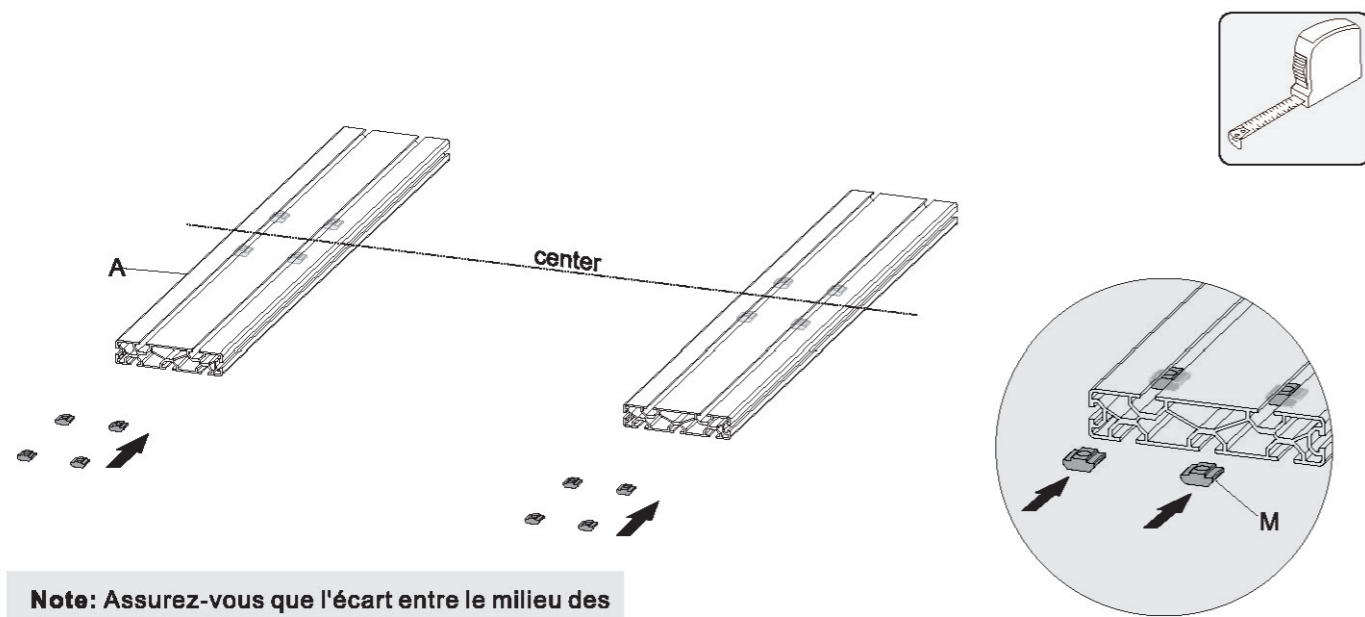
Kit M



1. Attachez la plaque de connexion à la colonne

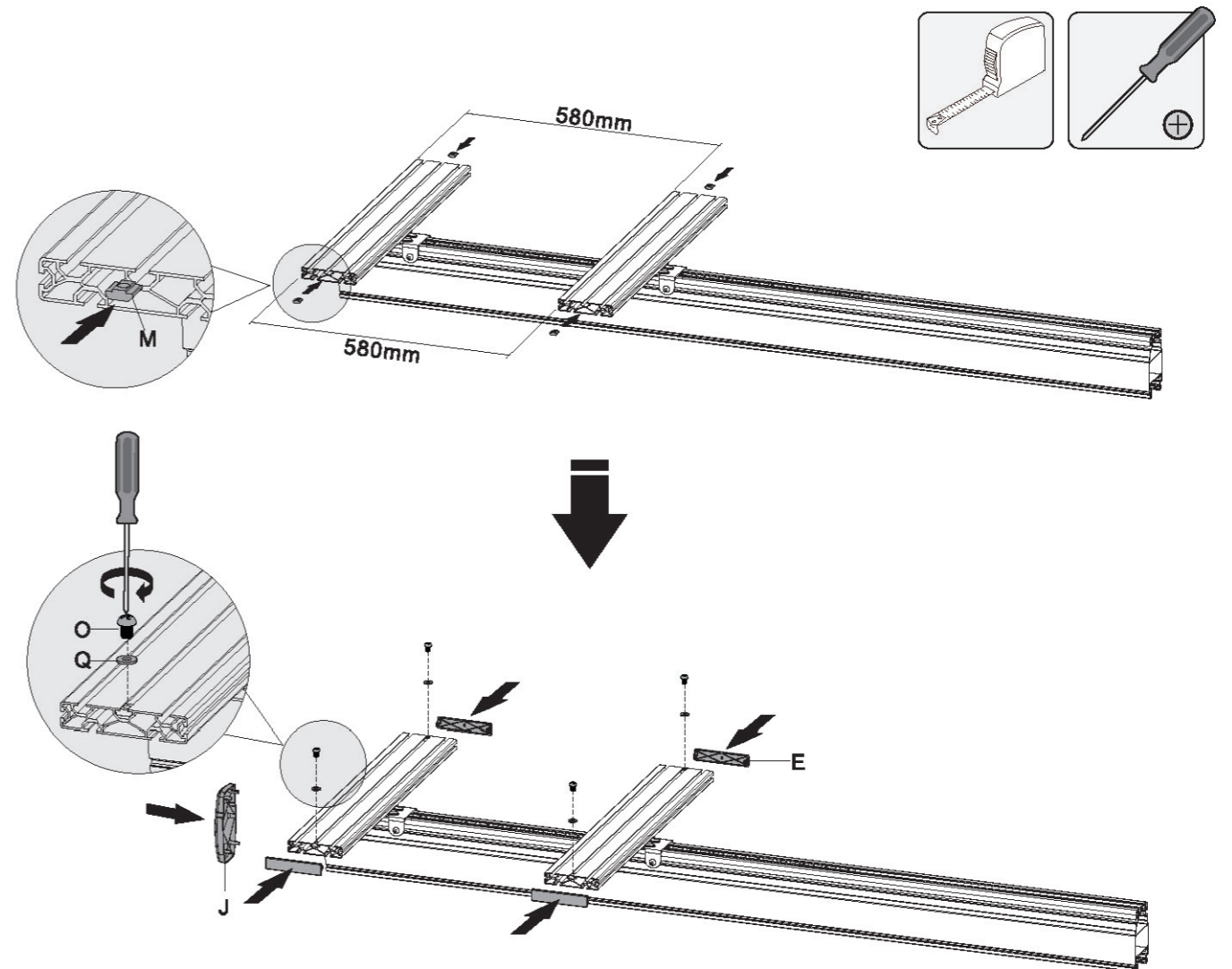


2. Attachez la colonne au rail de montage



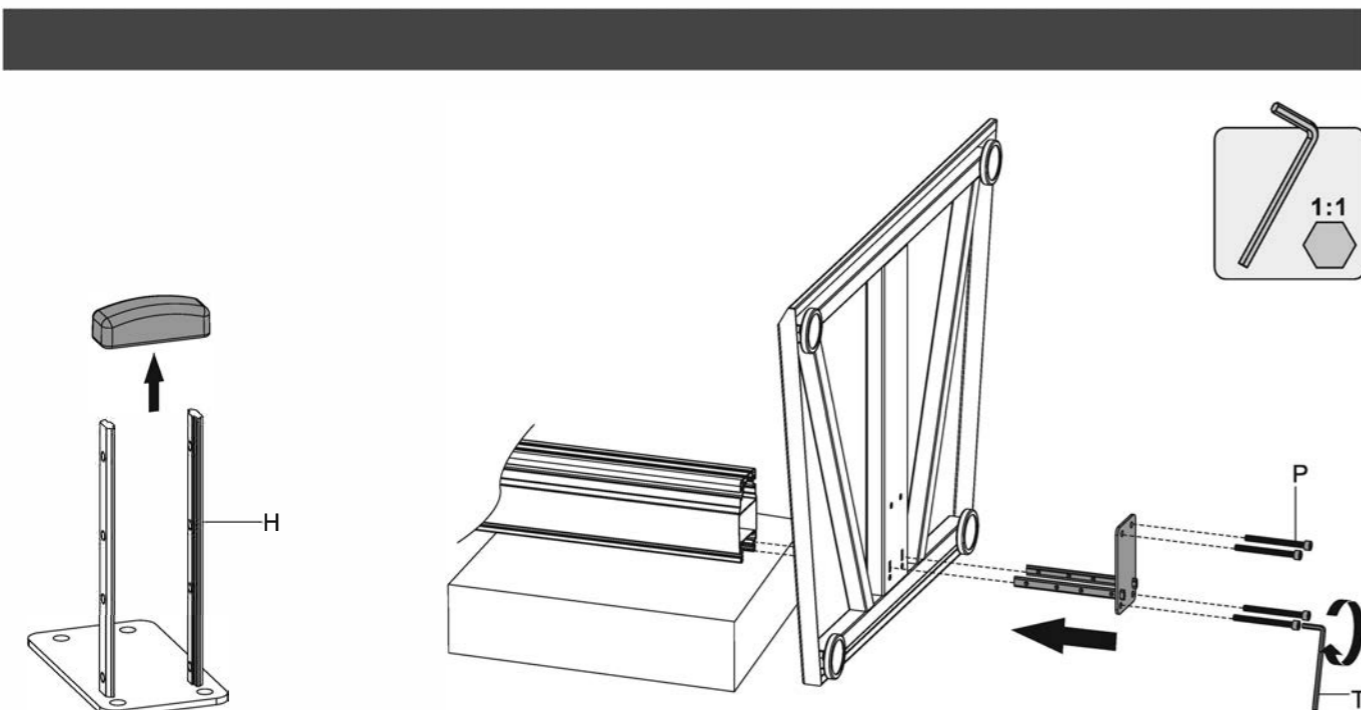
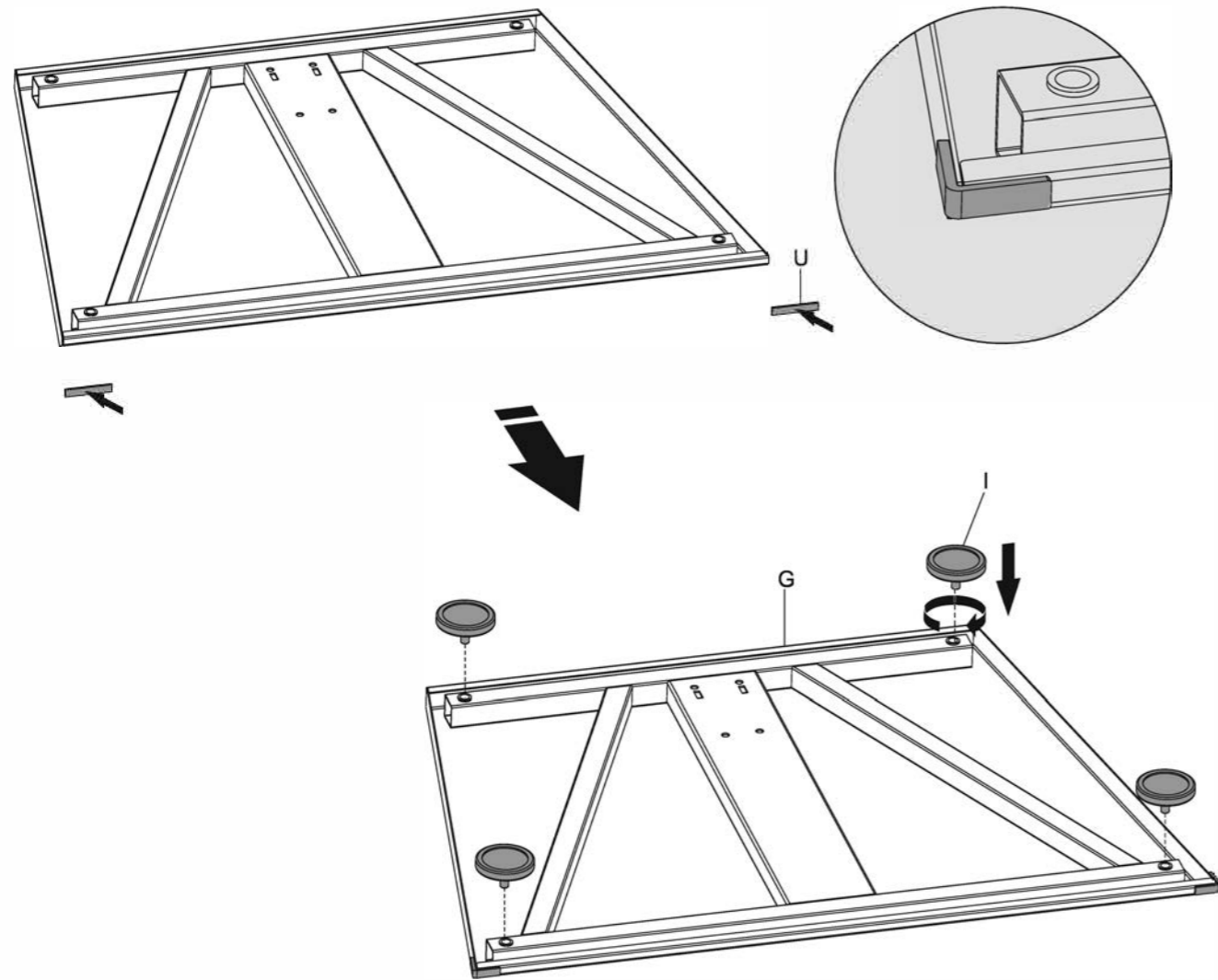
Note: Assurez-vous que l'écart entre le milieu des écrous est égal de chaque côté.

3. Installer le capuchon d'extrémité



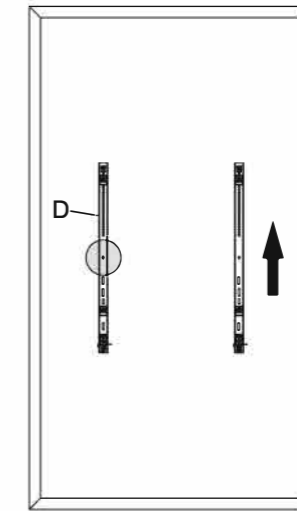
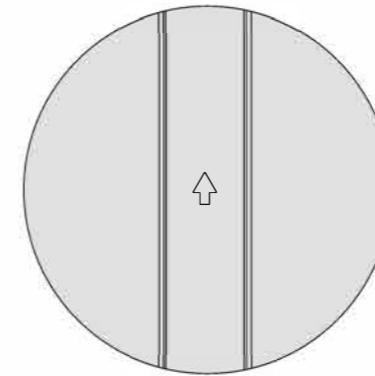
Note: Assurez-vous que la position des rails de montage est parallèle avant d'installer tout équipement audiovisuel.

4. Assemblare la base



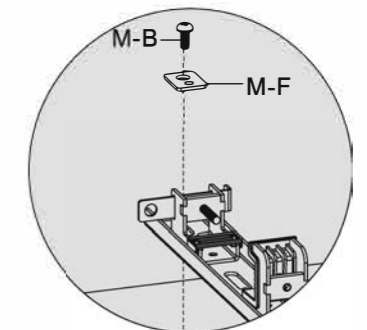
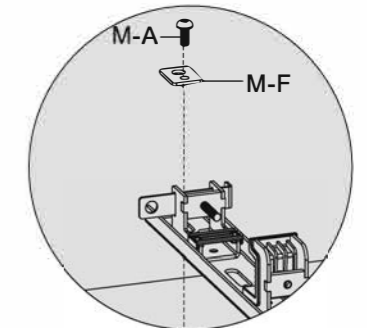
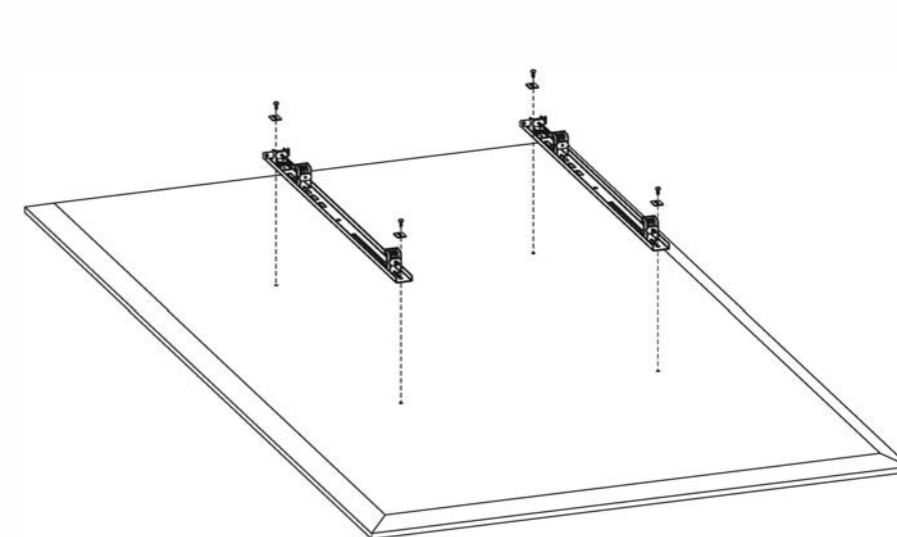
5. Fissare il supporto allo schermo

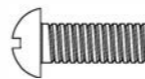

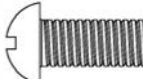


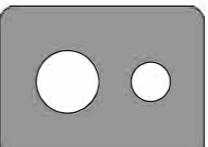
Con la freccia rivolta verso l'alto.



Parte superiore dello schermo.

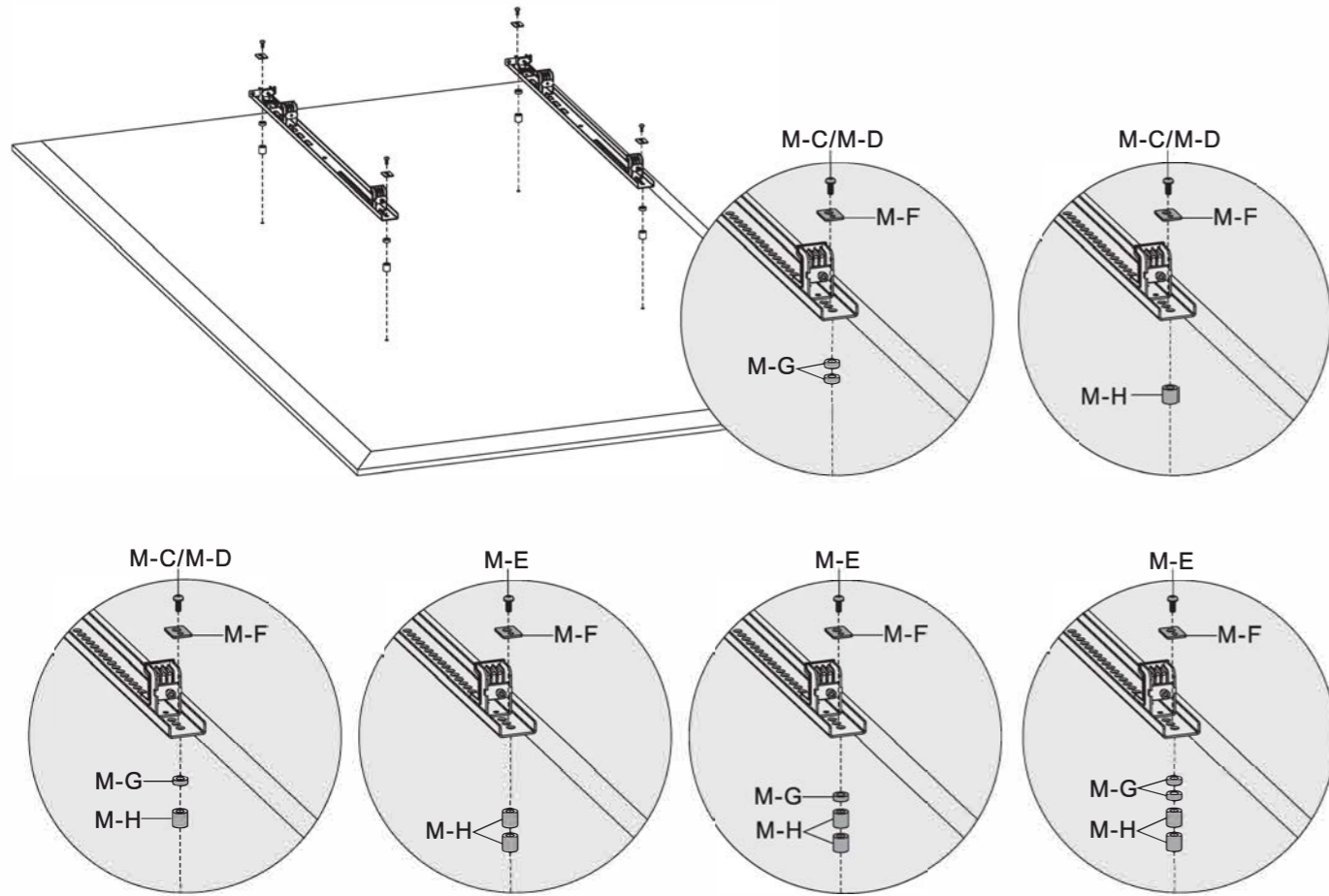
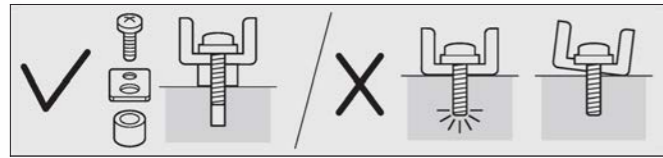
5a. Fissare la staffa TV allo schermo piatto posteriore



M-A 		M-B 	
M-F 			

1:1

5b. Fissare la staffa TV allo schermo posteriore non piatto



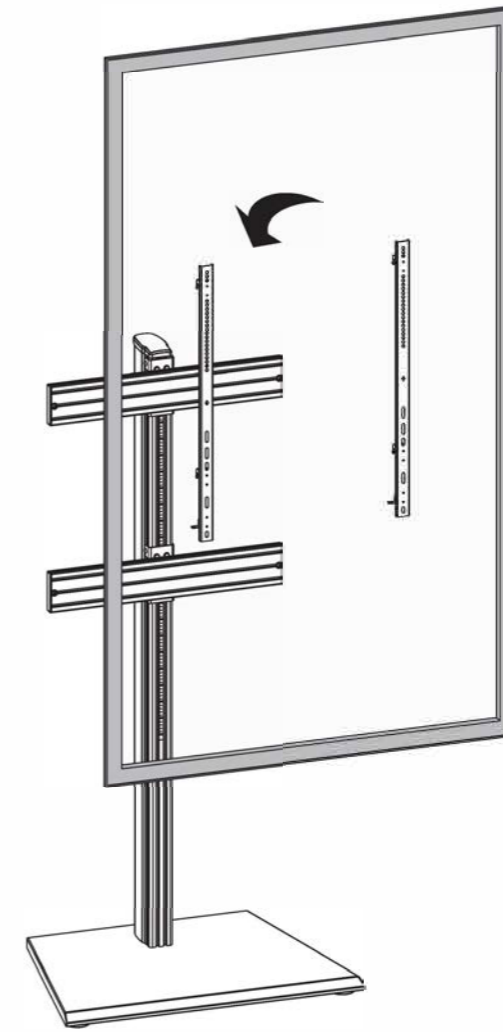
M-C		M-D	
M-E		M-F	
M-G		M-H	

1:1

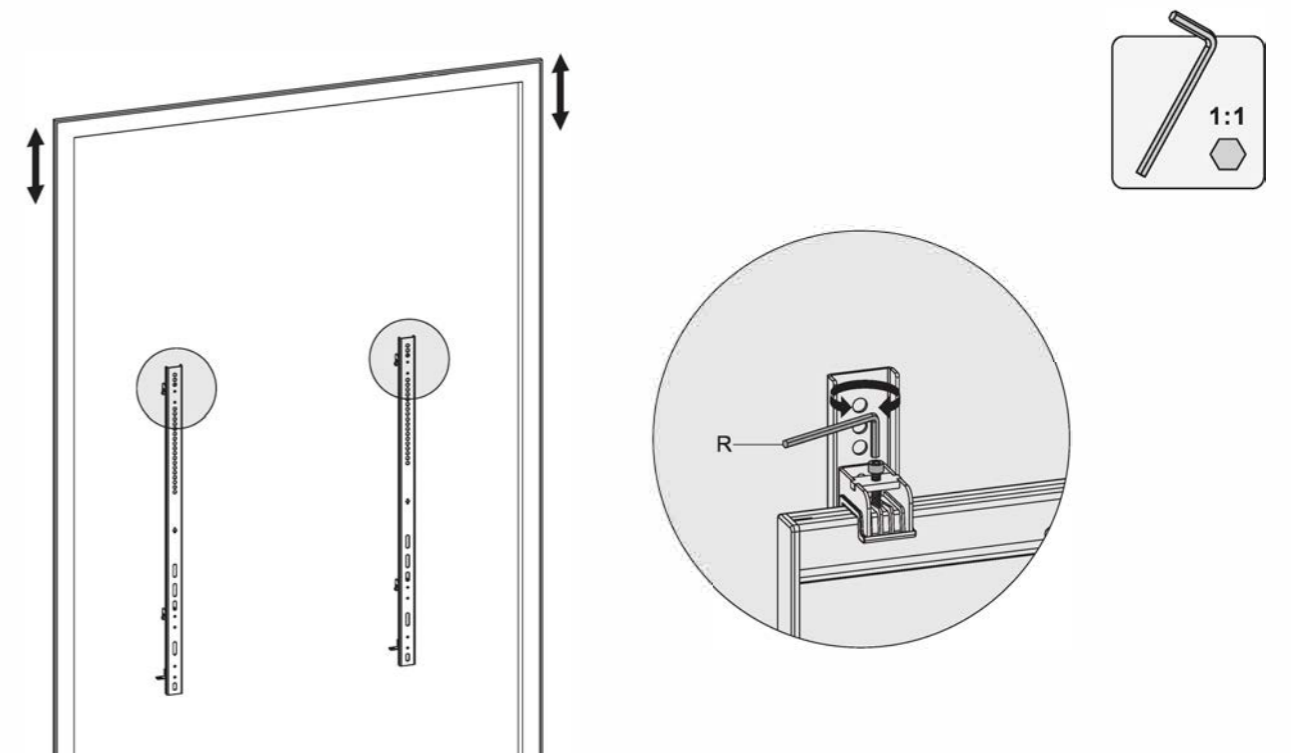
Note: scegliere le viti, le rondelle e i distanziali appropriati (se necessari) in base al tipo di schermo. Posizionare le staffe dell'adattatore il più vicino possibile al centro dello schermo. Avvitare la staffa dell'adattatore sullo schermo.

⚠ Stringere tutte le viti ma non serrare eccessivamente.

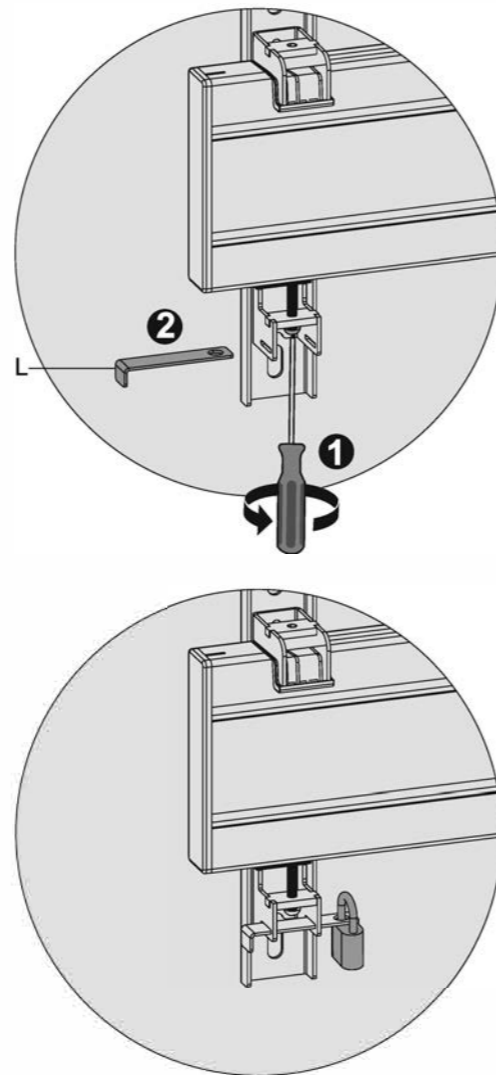
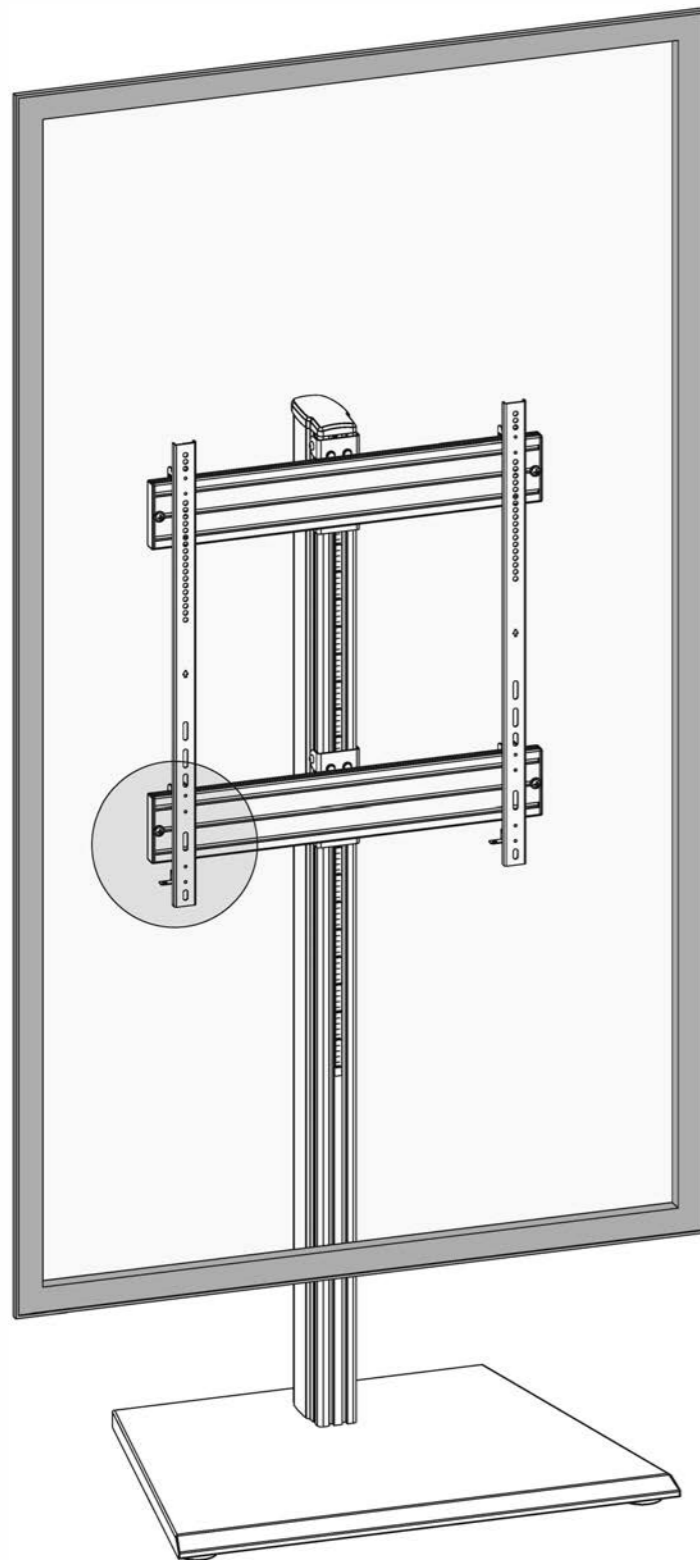
6. Agganciare lo schermo



7. Regolazione del livello

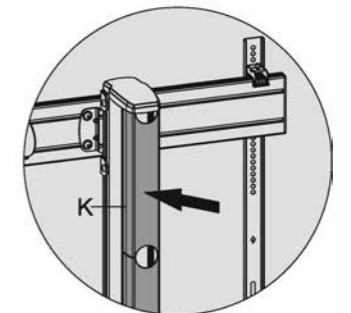
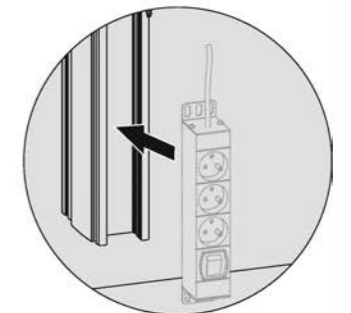
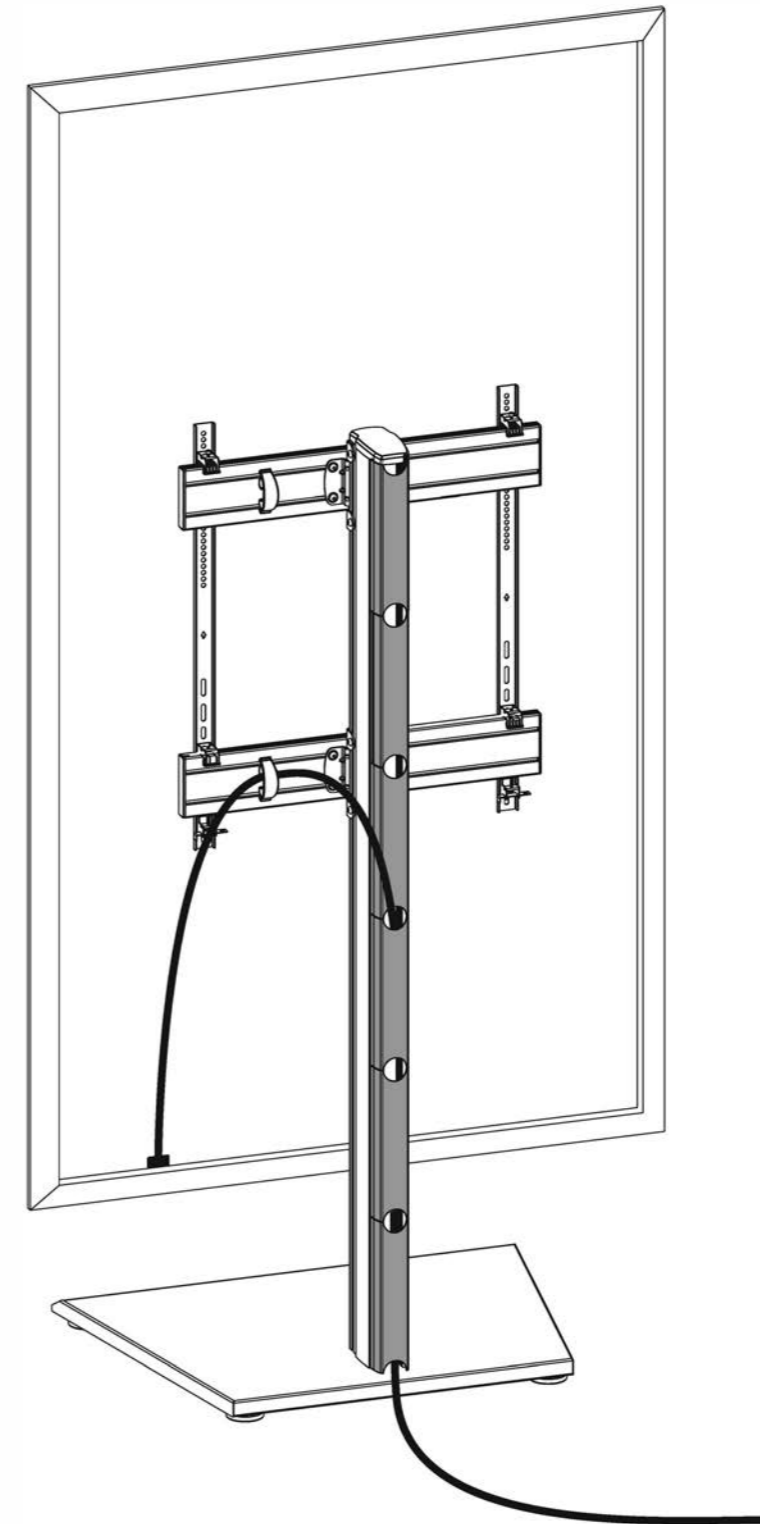


8. Fissare con un lucchetto



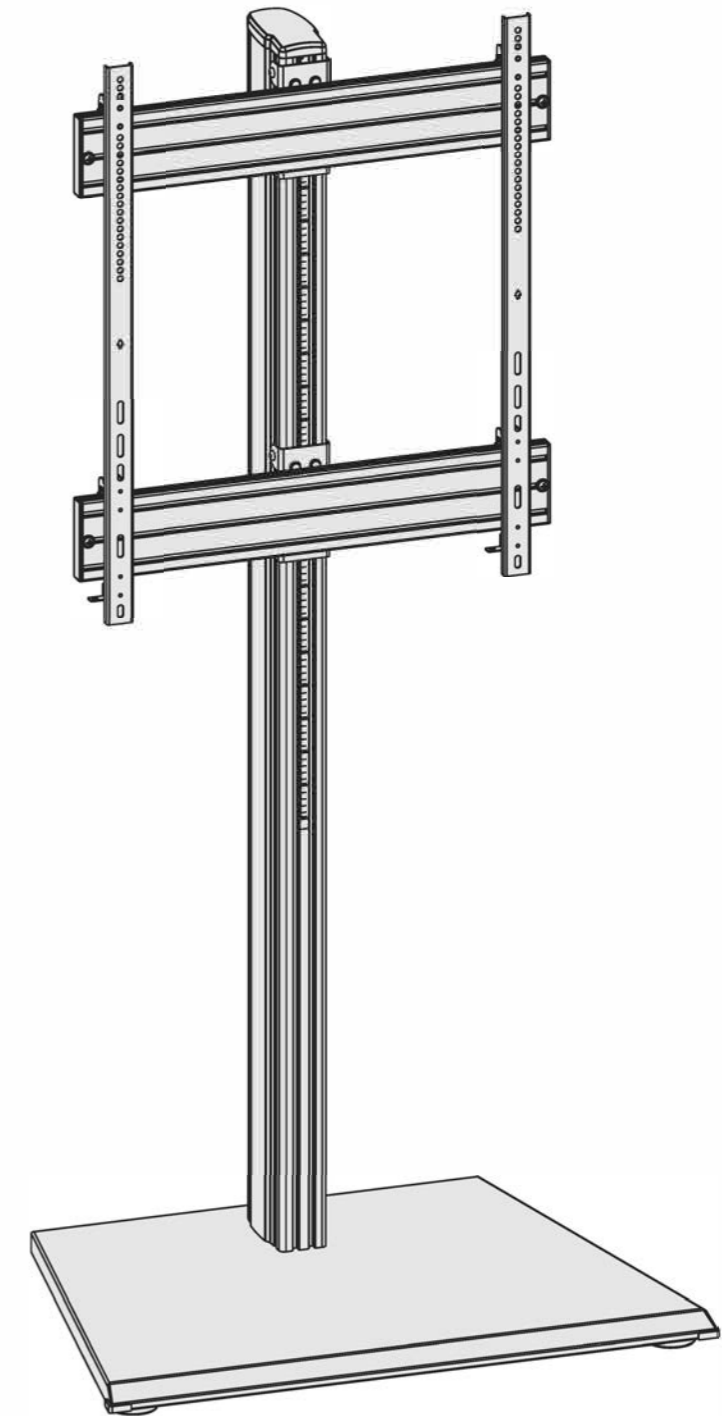
Note: Lucchetto non incluso

9. Gestione dei cavi



Manutenzione

- Verificare che il supporto sia sicuro e controllare ad intervalli regolari (almeno ogni tre mesi).



INSTALLATION MANUAL


031-1110K1



200x200/300x300
400x200/400x400
400x600/400x800
600x800



rated
150kg/330lbs

 **Read the entire instruction manual before you start installation and assembly. If you have any questions regarding any of the instructions or warnings, please contact your local distributor for assistance.**

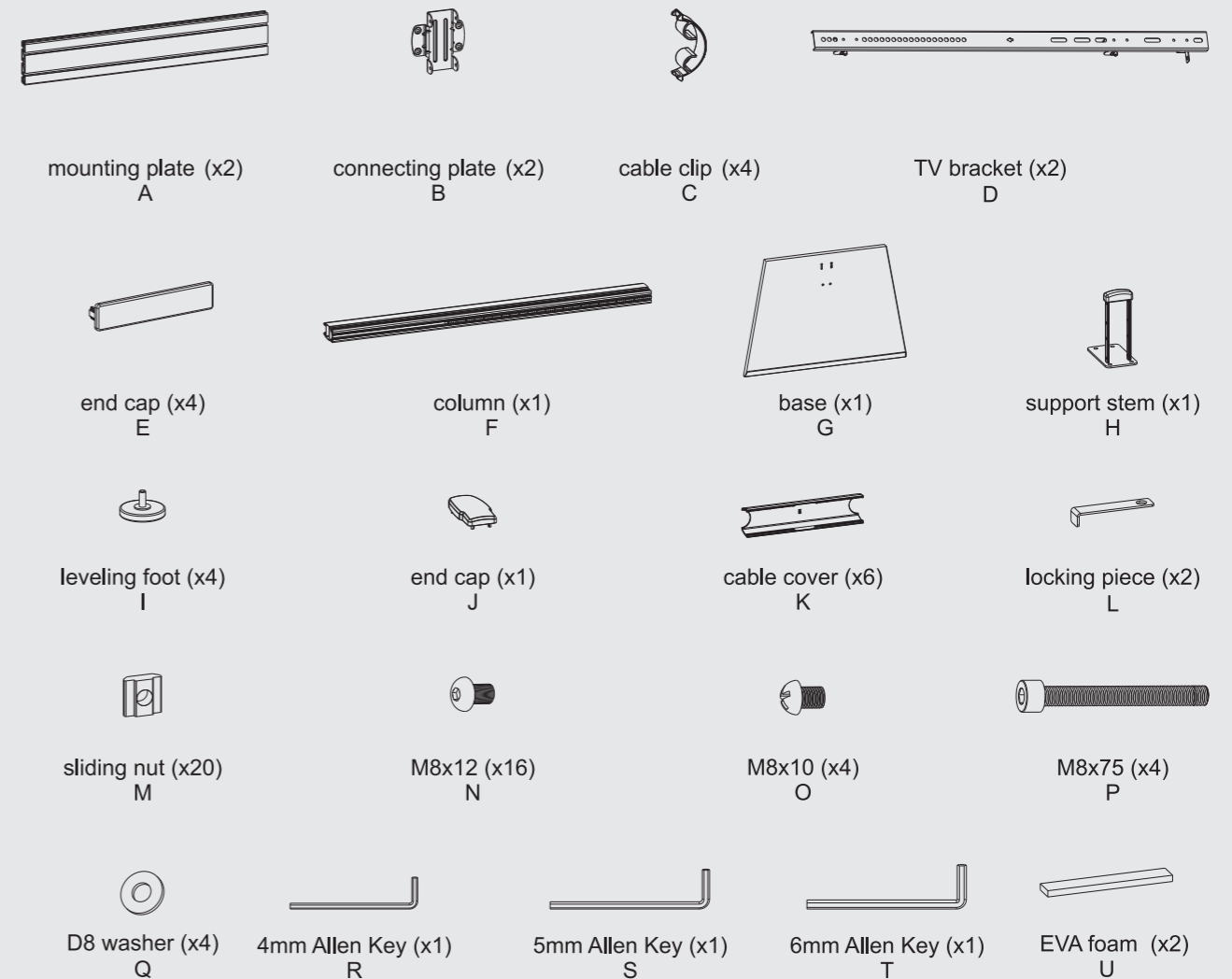
CAUTION

- Use with products heavier than the rated weights indicated may result in instability causing possible injury.
- Please closely follow the assembly instructions. Improper installation may result in damage or serious personal injury.
- Safety gear and proper tools must be used. This product should only be installed by professionals.
- Make sure that the supporting surface will safely support the combined weight of the equipment and all attached hardware and components.
- Use the mounting screws provided and **DO NOT OVER TIGHTEN** mounting screws.
- This product contains small items that could be a choking hazard if swallowed. Keep these items away from children.
- This product is intended for indoor use only. Using this product outdoors could lead to product failure and personal injury.

Required for Installation

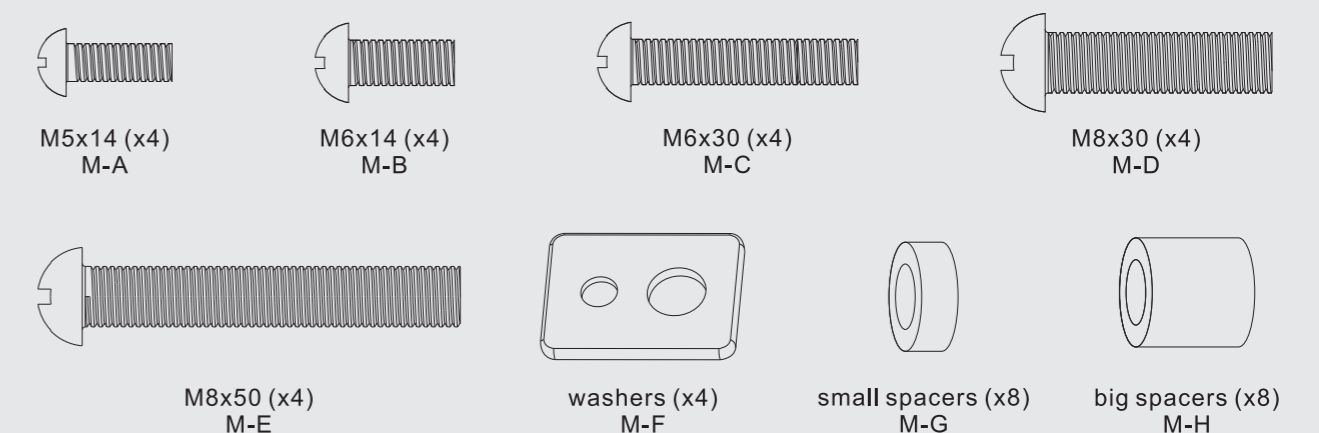


Component Checklist

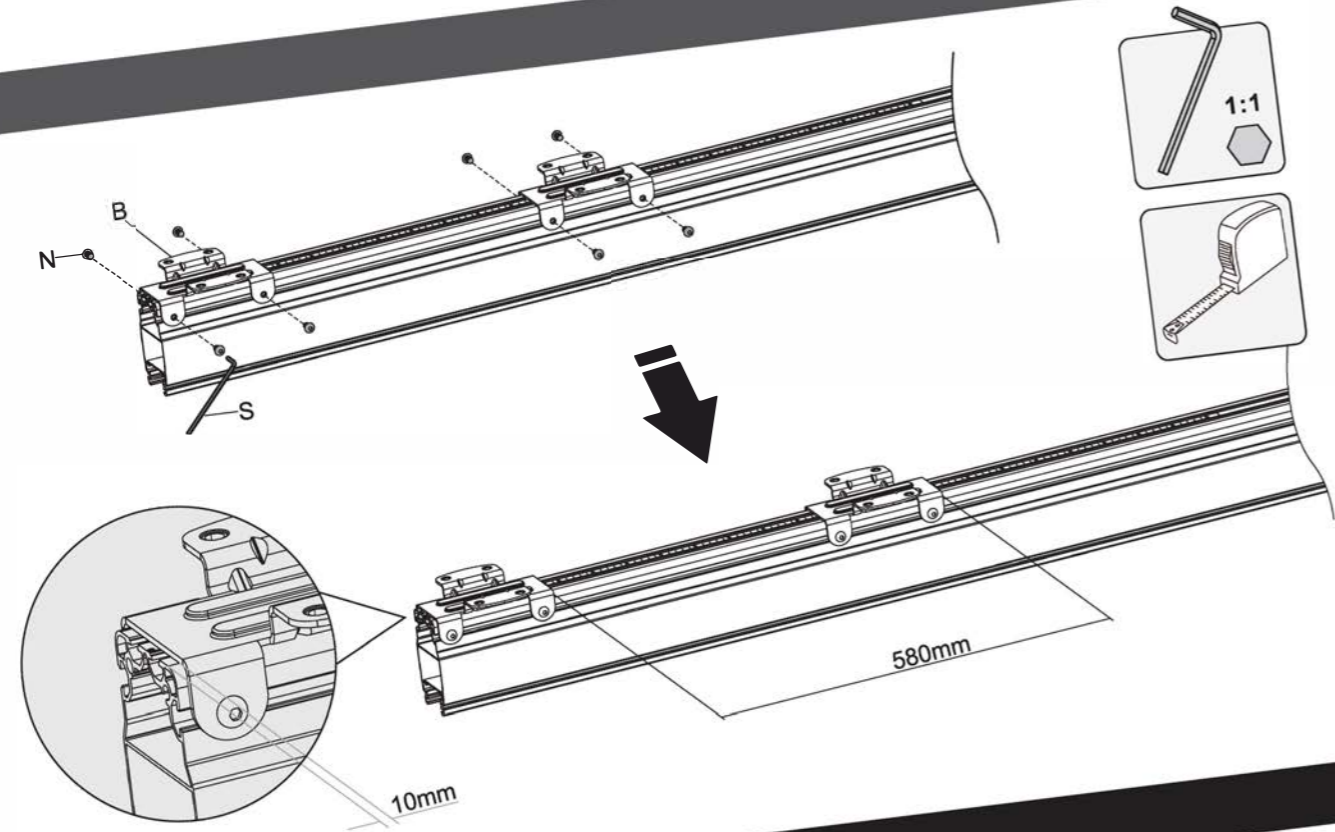
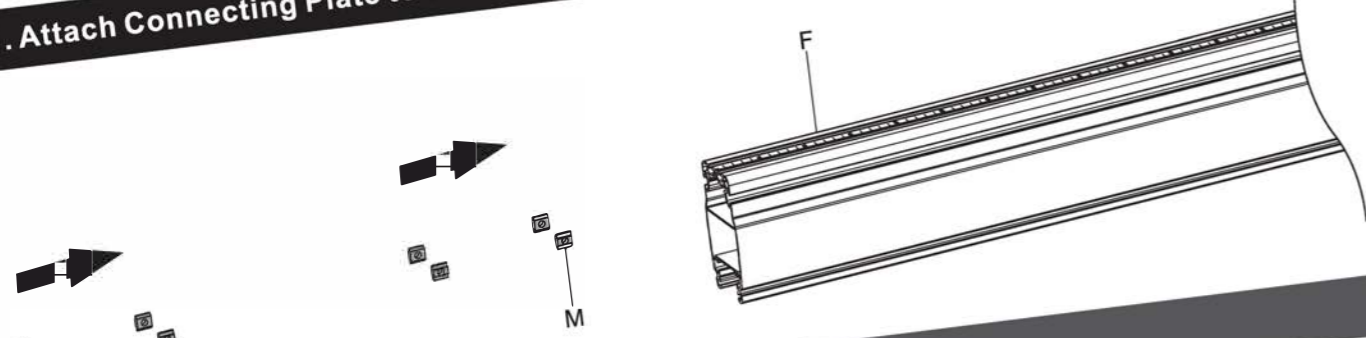


IMPORTANT: Ensure that you have received all parts according to the component checklist prior to installation. If any parts are missing or faulty, contact your place of purchase for a replacement.

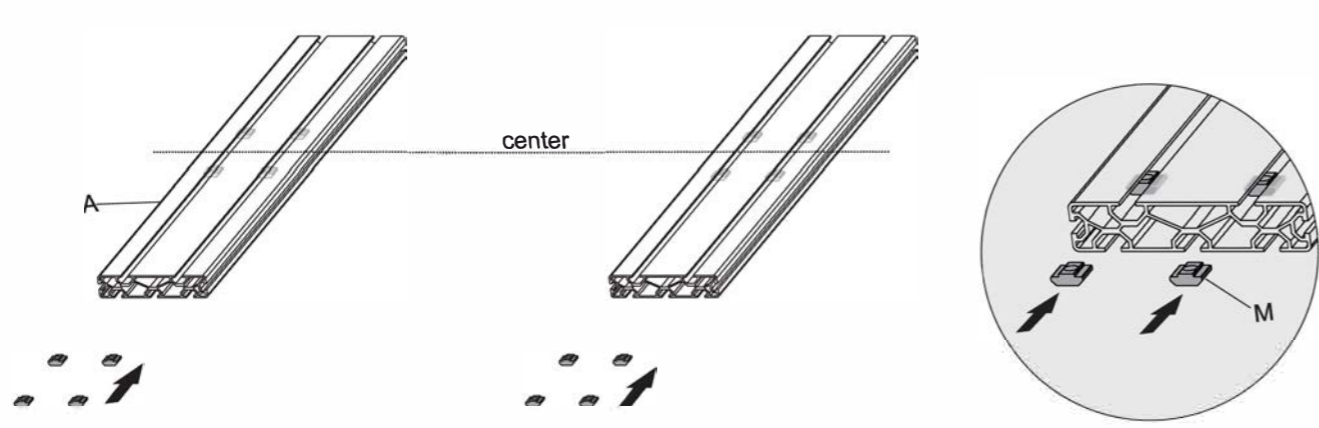
Package M



1. Attach Connecting Plate to the Column



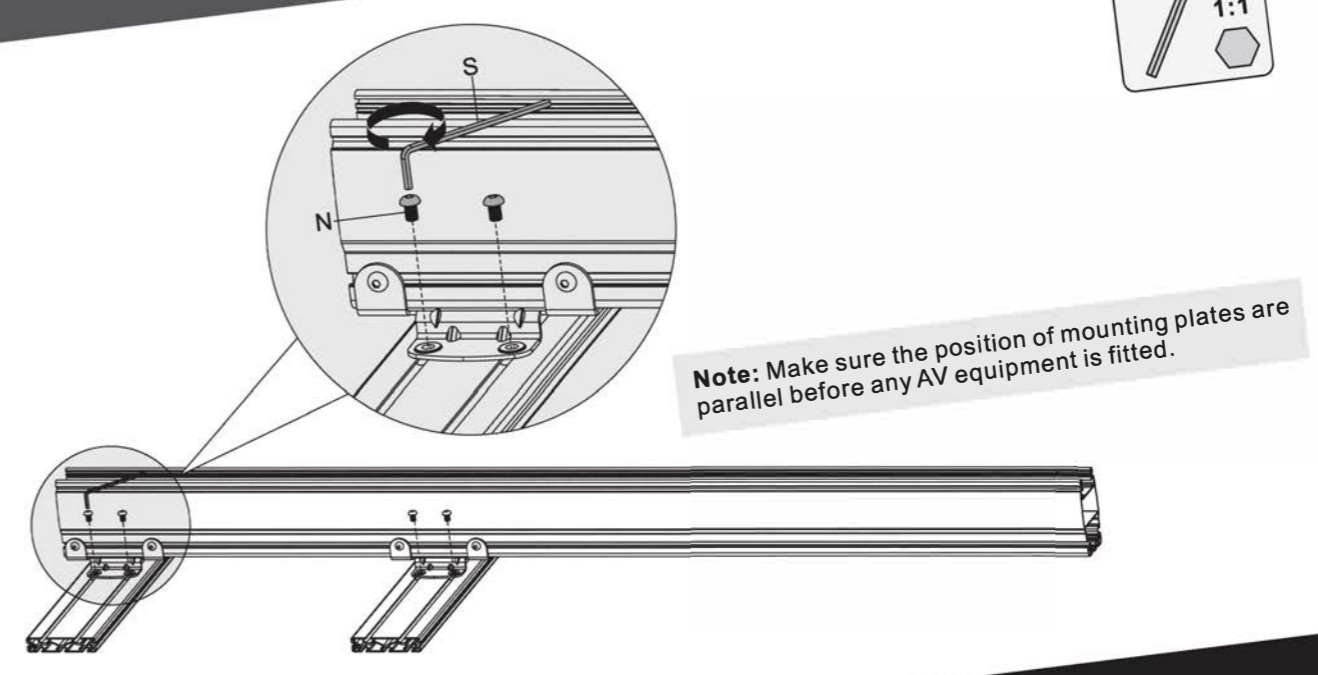
2. Attach Column to the Mounting Plate



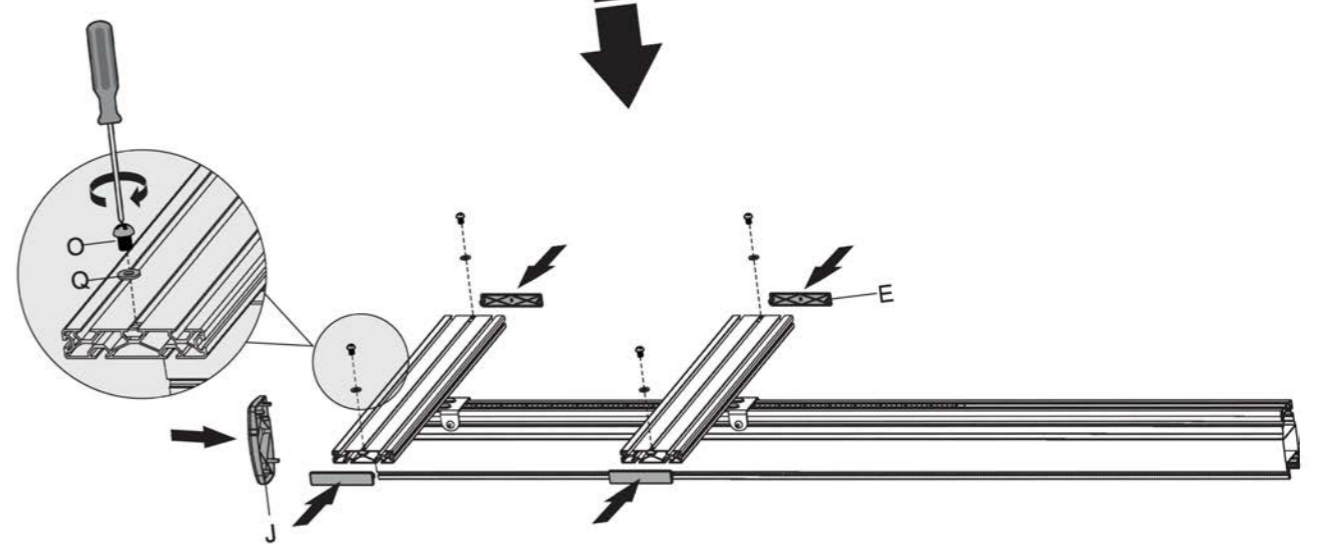
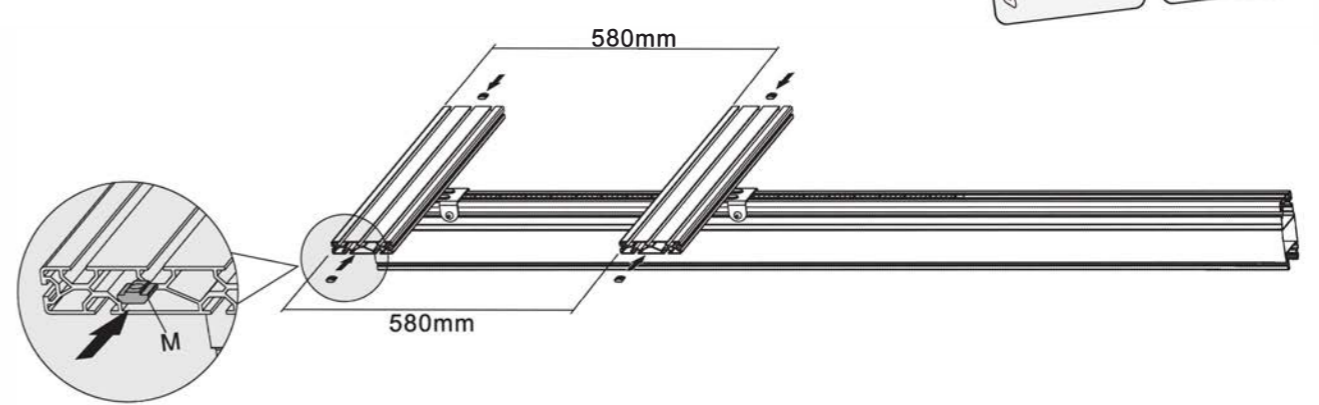
Note: Ensure the gap between the nuts is equal.



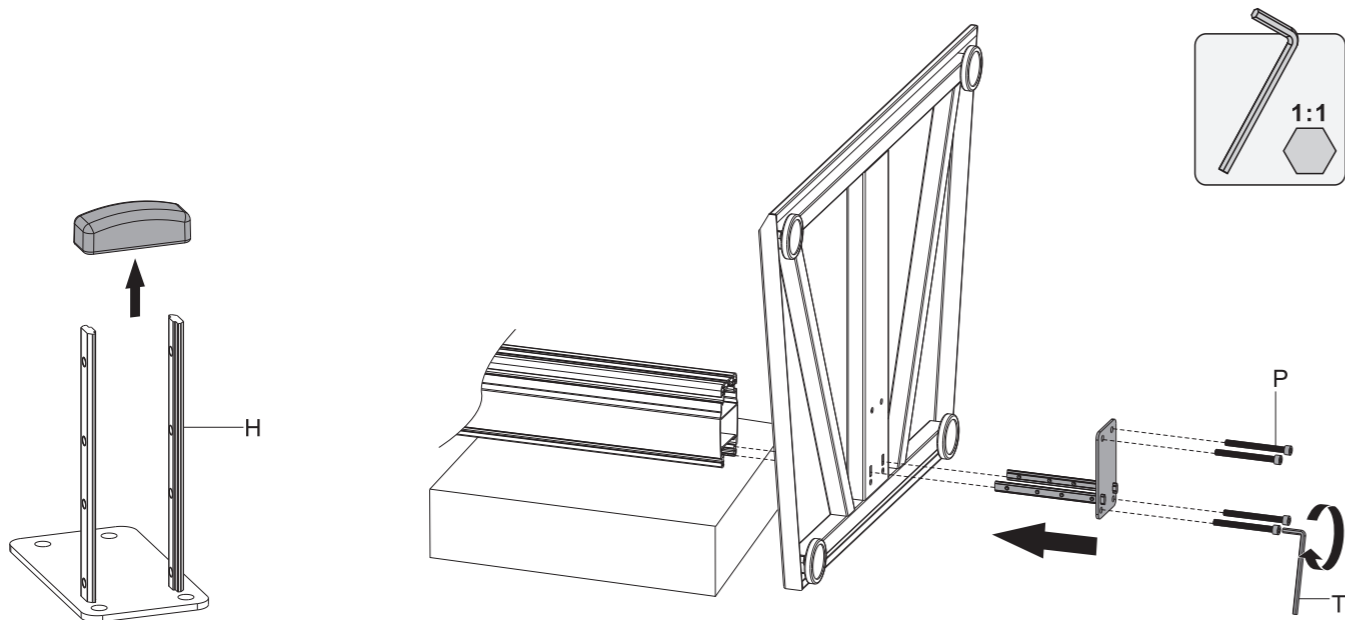
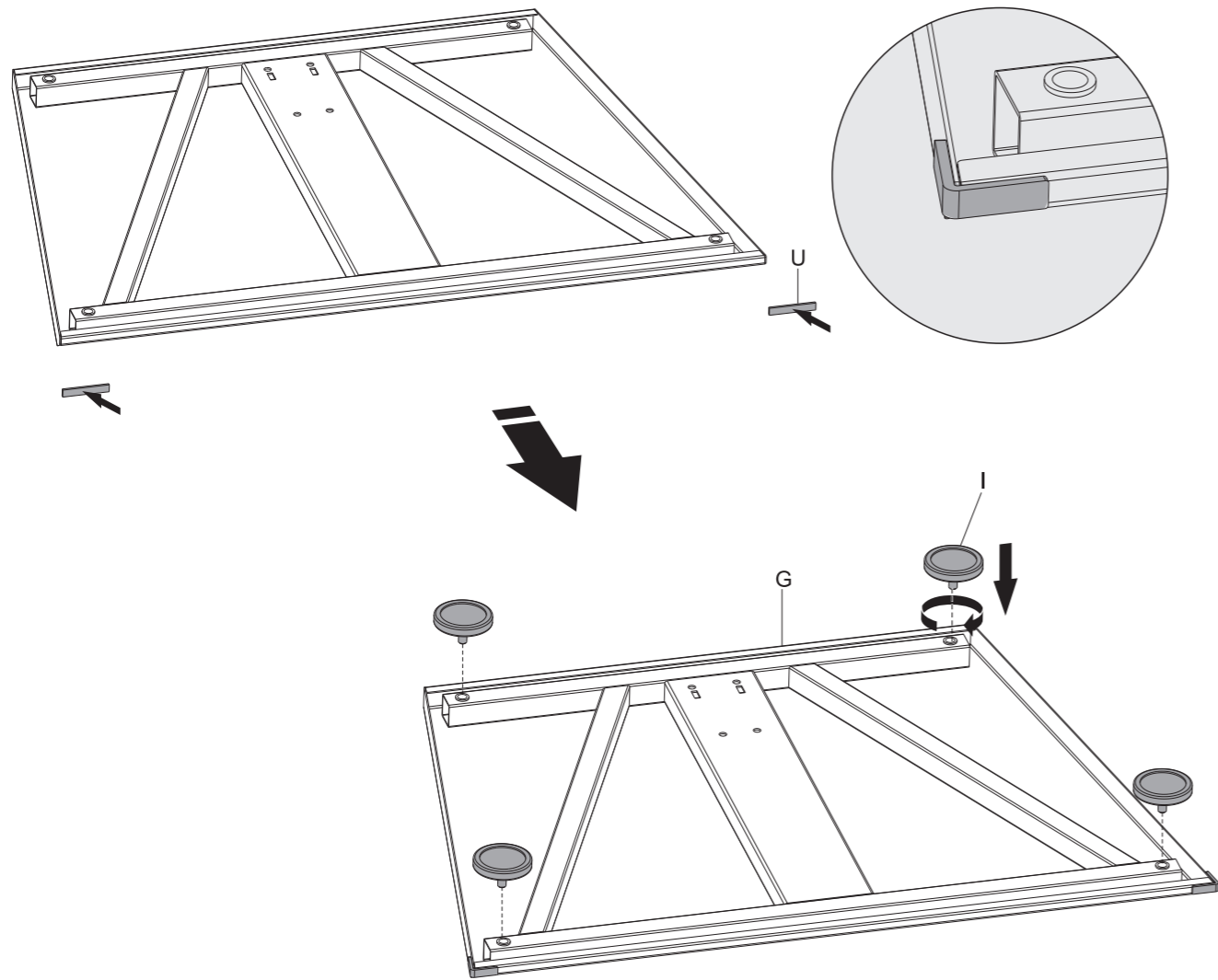
3. Install the End Cap



Note: Make sure the position of mounting plates are parallel before any AV equipment is fitted.

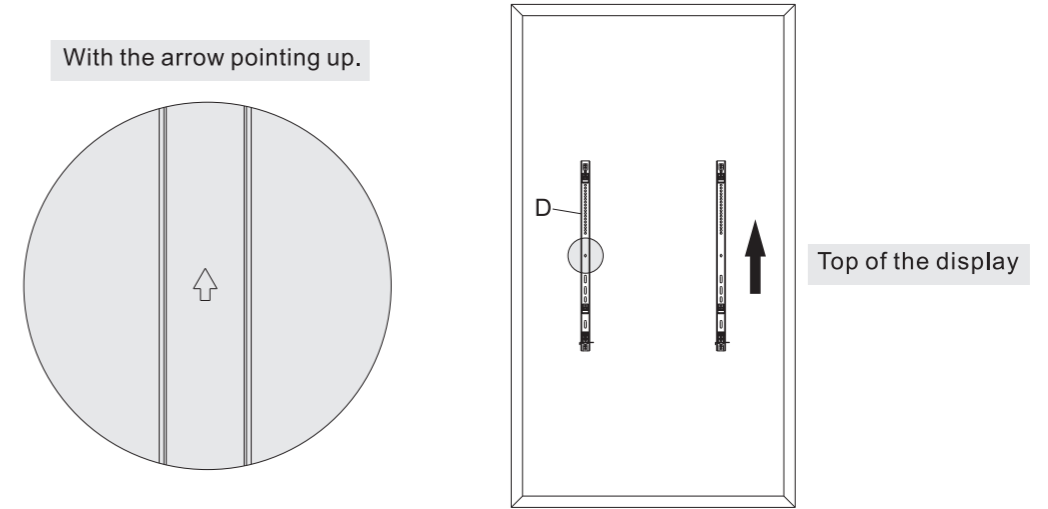


4. Assemble the Base

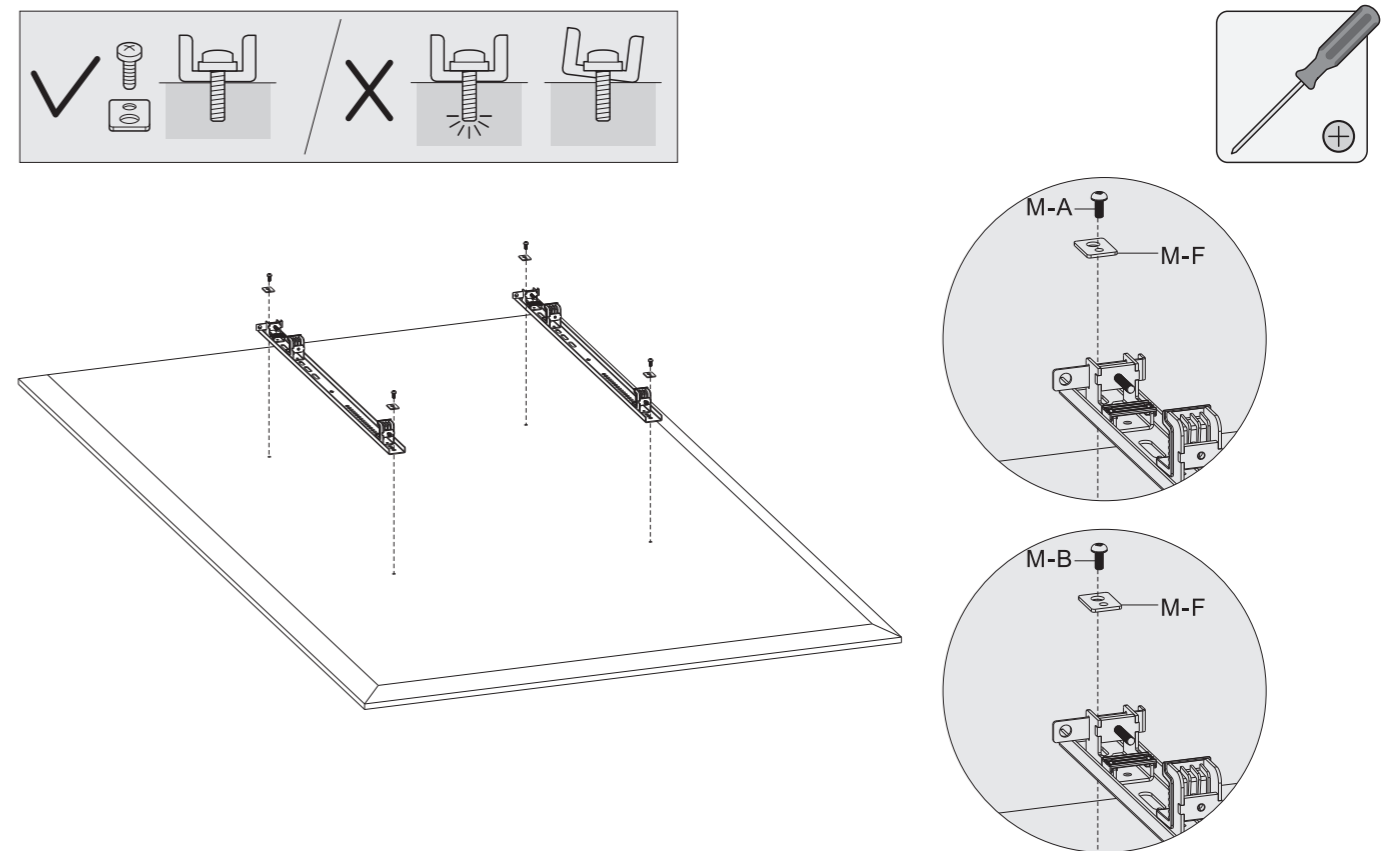


Note: Prepare and put a heightening pad for easier installation.

5. Attach TV Bracket



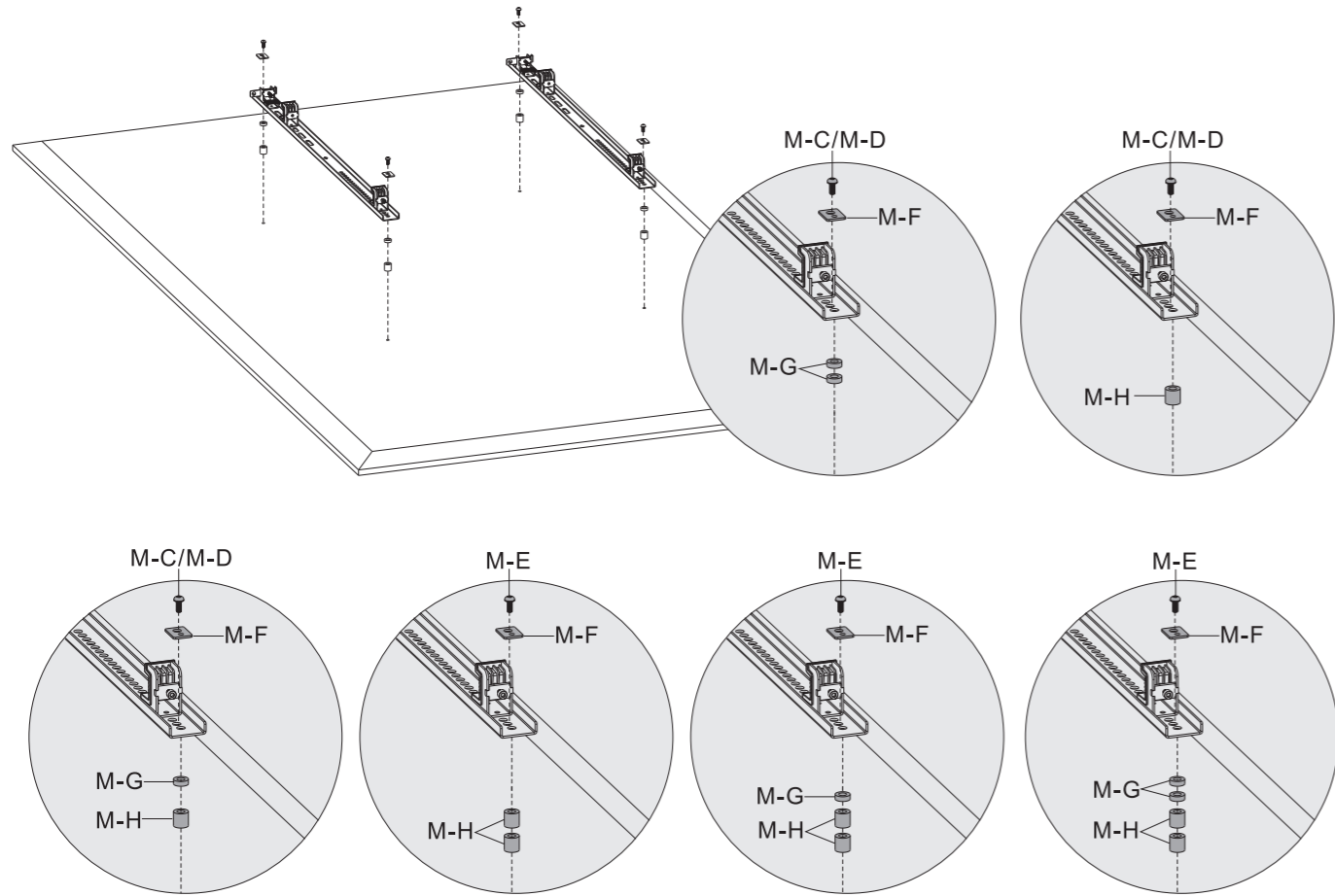
5a. Attach TV Bracket to Flat Back Screen



M-A			M-B		
M-F					

1:1

5b. Attach TV Bracket to Irregular Back Screen

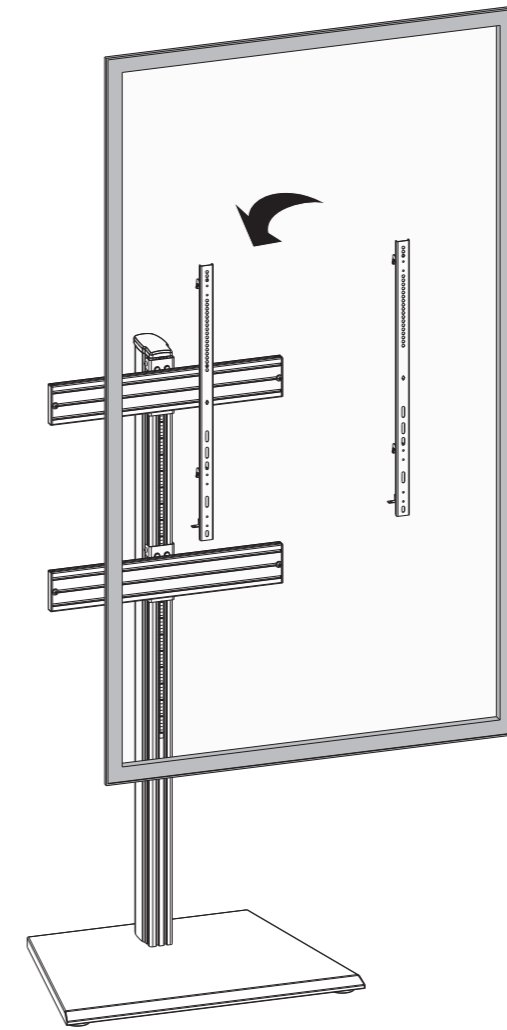


1:1			
M-C			
M-E			
M-G			

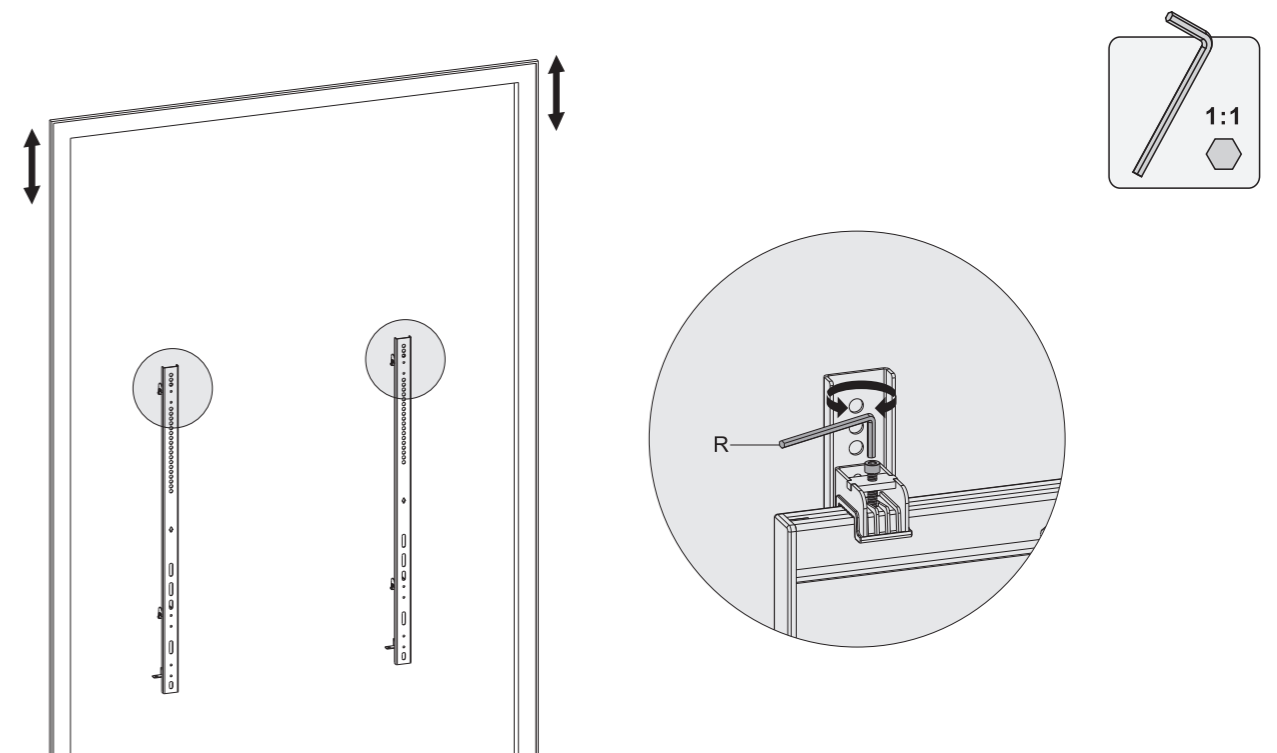
Note: Choose the appropriate screws, washers and spacers (if necessary) according to the type of screen.
 • Position the adapter brackets as close as possible to the center of the display.
 • Screw the adapter brackets onto the display.

⚠ Tighten all screws but do not over tighten.

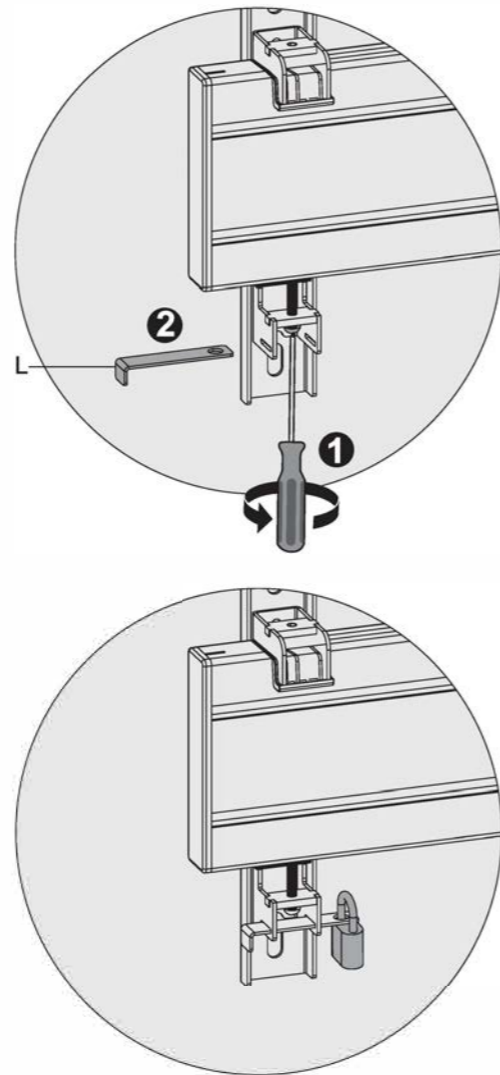
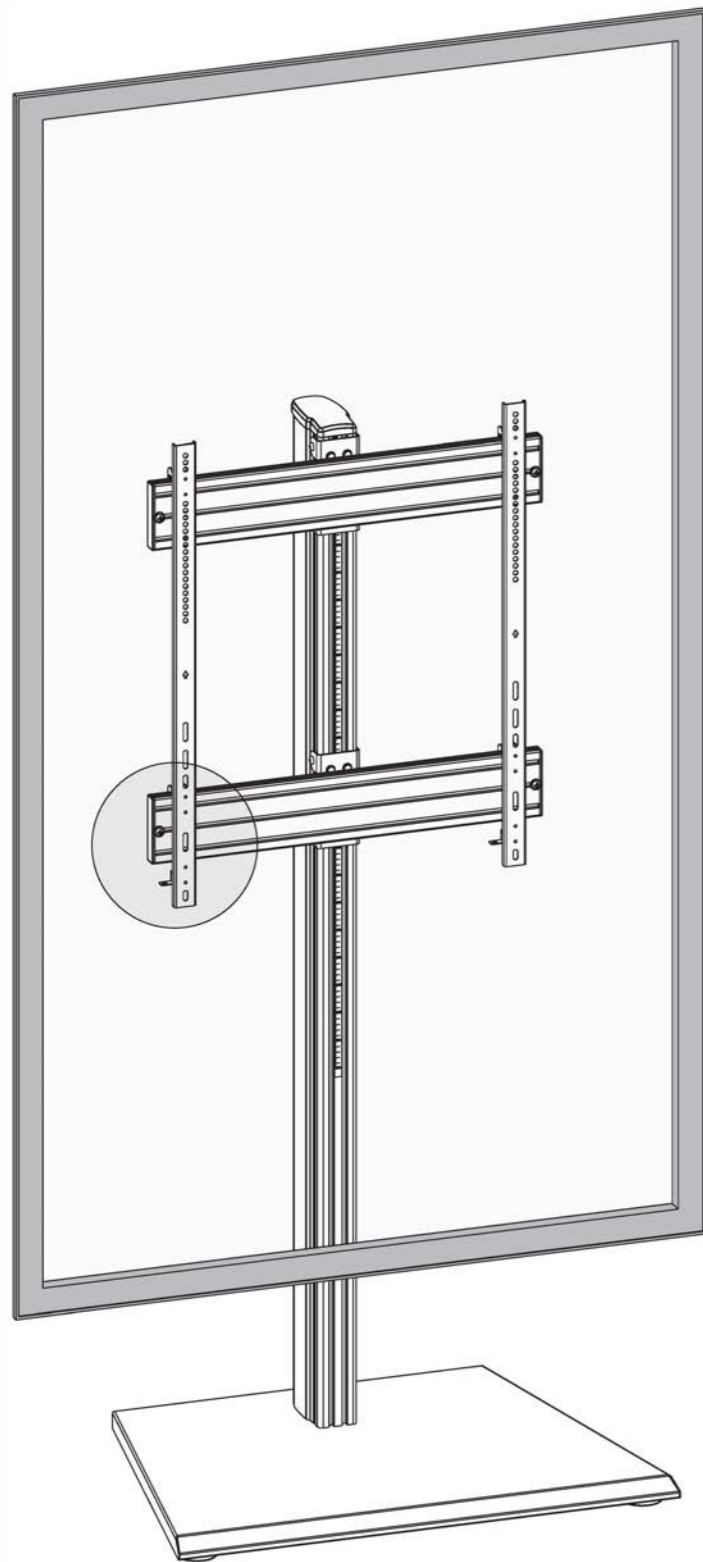
6. Hang the Screen



7. Level Adjustment

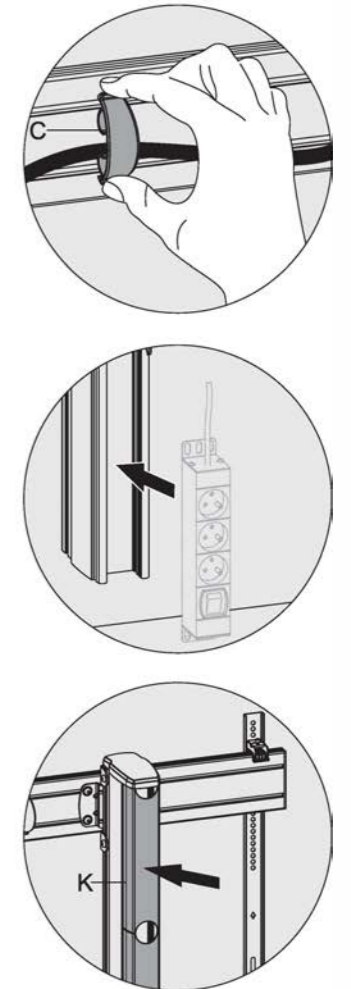
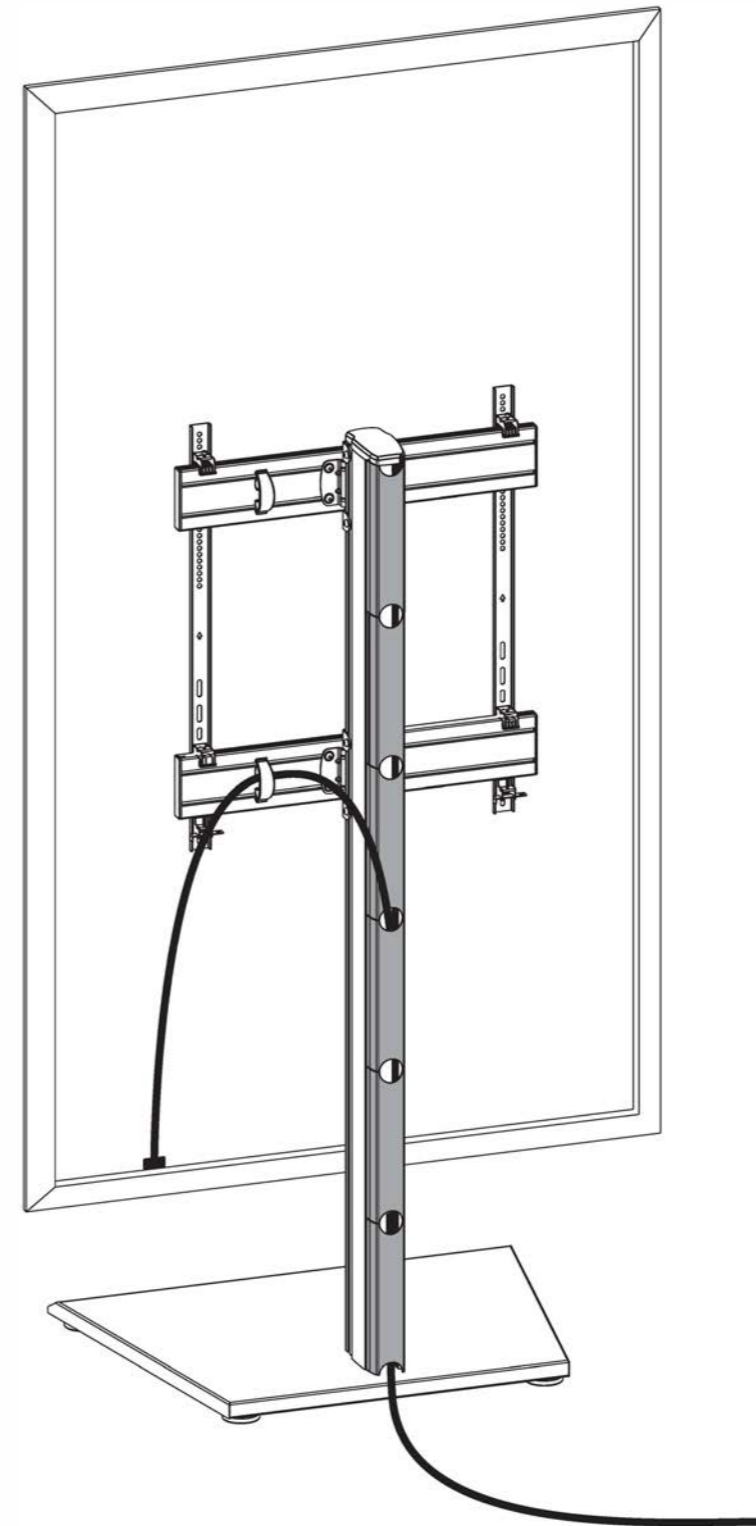


8. Secure with Padlock



Note: Padlock is not included.

9. Cable Management



Maintenance

- Check that the bracket is secure and safe to use at regular intervals(at least every three months).
- Please contact your distributor if you have any questions.